

ANNUAL REPORT

FOR THE YEAR ENDED 31 DECEMBER 2019



*Births, Marriages,
Domestic Partnerships
and Deaths*



GOVERNMENT OF BERMUDA
Ministry of Home Affairs

Registry General



—

—





GOVERNMENT OF BERMUDA
Ministry of Home Affairs

Registry General

ANNUAL REPORT

FOR THE YEAR ENDED 31 DECEMBER 2019

Births, Marriages, Domestic Partnerships and Deaths

TABLE OF CONTENTS

SCHEDULE OF TABLES AND FIGURES	iii
COMMENTS FROM THE REGISTRAR GENERAL	iv
GENERAL INFORMATION	1
Births	1
Deaths	1
Marriages	1
Domestic Partnerships	4
POPULATION	3
Resident Population	3
BIRTHS	4
Distribution of Live Births by Sex and Natal Status –2015 to 2019	4
Distribution of Live Births by Parish	4
Multiple Births	5
Distribution of Live Births by Age of Mother	6
Distribution of Live Births by Nationality	8
Additional Vital Events	8
MARRIAGES	10
Statistics Relating to Marriages – 2015 to 2019	10
Distribution of Marriages by Religion/Denomination	11
Marriage Venues	11
Persons Marrying by Age Group of Partners	12
Distribution of Marriages by Residential Status of Partners	13
Same-Sex Marriages.....	13
Same-Sex Marriage Venue	14
Same-Sex Person Marrying by Age Group of Partners.....	15
Distribution of Same-Sex Marriages by Residential Status of Partners	15
Maritime Marriages	15
DOMESTIC PARTNERSHIPS	15
Distribution of Domestic Partnerships by Parish and Venue	16
Distribution of Domestic Partnerships Unions by Month	16
Domestic Partnerships by Sex and Age of Partners.....	17
Distribution of Domestic Partnerships by Residential Status of Partners.....	17
Domestic Partnerships Maritime Ceremonies	17
DEATHS	18
Death Statistics Including Stillbirths – 2015 to 2019.....	18
Distribution of Deaths by Age and Sex – 2015 to 2019	19
Distribution of Deaths by Age and Sex – 2019.....	20
Distribution of Deaths by Age and Parish of Residence of the Deceased	21
Infant Mortality Rates	22
Deaths of Non-Residents – 2019	22
Coroners’ Cases	23
APPENDIX	24
Table A – Births, Marriages, Domestic Partnerships, Deaths and Population Estimates – 2015 to 2019	24
Figure A – Births, Marriages and Deaths – 2015 to 2019	24

SCHEDULE OF TABLES AND FIGURES

Table 1.0	Summary Statistics	Page 2
Figure 1.0	Population Estimates - 2015 to 2019	Page 3
Table 2.0	Distribution of Live Births by Sex and Natal Status - 2015 to 2019	Page 4
Table 2.1	Distribution of Live Births by Sex, Natal Status and Parish - 2019	Page 5
Table 2.2	Distribution of Multiple Births by Sex – 2015 to 2019	Page 5
Figure 2.0	Distribution of Live Births by Age of Mother and Natal Status - 2019	Page 6
Table 2.3	Distribution of Live Births by Age of Mother of Children Born In Wedlock - 2015 to 2019	Page 7
Table 2.3	Distribution of Live Births by Age of Mother of Children Born Out of Wedlock - 2015 to 2019	Page 7
Table 2.3	Distribution of All Live Births by Age of Mother - 2015 to 2019	Page 7
Table 2.4	Distribution of Live Births by Nationality	Page 9
Table 3.0	Distribution of Marriages by Type of Ceremony – 2015 to 2019	Page 10
Table 3.1	Distribution of Marriages by Religion/Denomination – 2015 to 2019	Page 11
Table 3.2	Distribution of Marriages by Parish and Venue – 2019	Page 12
Table 3.3	Distribution of Persons Marrying by Sex and Age Group of Partners – 2019 and 2018	Page 12
Table 3.4	Distribution of Marriages by Residential Status – 2015 to 2019	Page 13
Table 3.5	Distribution of Same-Sex Marriages by Type of Ceremony – 2019	Page 13
Table 3.6	Distribution of Same-Sex Marriages by Parish and Venue - 2019	Page 14
Table 3.7	Distribution of Same-Sex Marriages by Age and Sex of Partners	Page 14
Table 3.8	Distribution of Same-Sex Marriages by Residential Status - 2019	Page 15
Table 4.0	Distribution of Domestic Partnerships by Parish and Venue – 2019 and 2018	Page 15
Table 4.1	Distribution of Domestic Partnerships by Month – 2019 and 2018	Page 16
Table 4.2	Distribution of Domestic Partnerships by Sex and Age of Partners – 2019 and 2018	Page 16
Table 4.3	Distribution of Domestic Partnerships by Residential Status – 2019 and 2018	Page 17
Table 5.0	Distribution of Deaths by Sex and Stillbirths – 2015 to 2019	Page 18
Table 5.1	Distribution of Deaths by Age and Sex – 2015 to 2019	Page 19
Table 5.2	Distribution of Deaths by Age and Sex – 2019	Page 20
Table 5.3	Distribution of Deaths by Age and Parish of Residence of the Deceased – 2019	Page 21
Table 5.4	Infant Mortality – 2015 to 2019	Page 22
Table 5.5	Deaths of Non-Residents – 2015 to 2019	Page 23
Table A	Table A – Births, Marriages, Domestic Partnerships, Deaths and Population Estimates – 2015 to 2019	Page 24
Figure A	Births, Marriages and Deaths – 2015 to 2019	Page 24

COMMENTS FROM THE REGISTRAR GENERAL



I have the pleasure of presenting the Annual Report for the year ended December 31, 2019 which has been diligently prepared in accordance with Section 19 of the Registration (Births and Deaths) Act 1949. In full recognition of the role of the Registrar General in the compilation of vital statistical information and the important role that it plays in planning for the provision of services in areas such as education, health and tourism to name a few, I have taken the necessary steps to ensure that the highest quality is maintained in the recording, collating and presenting of the data to be included in the Annual Report.

This Annual Report is concerned and focuses principally on vital statistics in respect of the resident population of Bermuda. The Annual Report seeks to provide an illustrative statistical digest of vital events such as live births, deaths, foetal deaths (stillbirths), marriages, domestic partnerships, adoptions and re-registrations of births.

In the preparation of this report, I have relied on information received from the Records Office of the King Edward VII Memorial Hospital relating to births; from the local funeral directors and medical practitioners in relation to deaths; from local residents and visitors in relation to domestic partnerships; and from local marriage officers and Masters of Bermuda registered ships in relation to local and maritime marriages respectively. The occurrence of sudden deaths is reported to the Registrar General by the Coroners' Office and Officers of the Magistrates' Court are responsible for informing the Registrar General of adoptions that take place on the Island.

The population estimates for the year ended December 31, 2019 are based on the 2016 Census figures. The excess number of live births over deaths for each year since then has been added to the base figures to compute the population statistics. No consideration has been given to the effect of emigration or immigration on the population.

I am grateful and acknowledge the expertise and commitments demonstrated by my staff in the provision of vital registration services to local and overseas residents in 2019 and hereby submit my Annual Report for the year ended December 31, 2019.

Aubrey Pennyman
Registrar General

GENERAL INFORMATION

Births

The Registrar General is notified by the King Edward VII Memorial Hospital Medical Records Department of the births of children born there on a weekly basis. When a child is born at a location other than the hospital, notification is made by the person or persons who attended the birth.

For the year ended 31st December, 2019 the total number of live births recorded in respect of residents was 525; a decrease of 5 or 0.9% from the 530 births recorded in 2018.

The live birth rate of the population decreased by 0.1 point per thousand from 8.3 points recorded in 2018 to 8.2 points in 2019.

The number of births that occurred out of wedlock in 2019 decreased by 1.5% from the number of out of wedlock births for the previous year. The out of wedlock distribution of births occurring during the five-year period 2015 to 2019 ranged from a high of 48.9% in 2018 to a low of 41.0% in 2017.

Deaths

The Registrar General receives notices of deaths occurring on the Island and within Bermuda's territorial waters from local funeral directors. The notices of deaths are sent to the Registrar General by the Coroners' Office in cases where inquests have been held into the causes of deaths.

A total of 544 deaths were recorded for the year ended 31st December, 2019. This figure consists of 535 deaths of residents and 9 deaths of non-residents. No stillbirths were recorded in 2019.

A death rate of 8.4 per thousand of the population for 2019 reflects an increase from 8.3 recorded in 2018.

Marriages

The Registrar General received information pertaining to marriages celebrated on the Island from local marriage officers. Information in respect of marriages that take place on the high seas aboard Bermuda registered ships is provided by the Masters of these ships.

There were 386 marriages performed in Bermuda for the year ended 31st December, 2019, a 18.4% decrease from the 473 marriages recorded in 2018. Out of the 386 marriages, 195 or 50.5% of the marriages took place between parties who were both non-residents; 153 or 39.6% of the marriages between parties who were both residents and 38 or 9.8% of the marriages between a resident party and a non-resident party. There was a 6.4% decrease in maritime marriages recorded in 2019 when comparing 442 marriages to 472 maritime marriages recorded in 2018.

Domestic Partnerships

The Registrar General received information pertaining to domestic partnership ceremonies performed on the Island from applications received from local residence. Information in respect of domestic partnership ceremonies that take place on the high seas aboard Bermuda registered ships is provided by the Masters of these ships.

There were four domestic partnership ceremonies performed in Bermuda for the year ended 31st December, 2019. Three ceremonies took place between parties who were both residents and the other ceremony between a resident and a non-residents.

Table 1.0 contains a summary of the statistics of births, deaths and population estimates as of 31st December, 2019.

Table 1.0
Summary Statistics

	Male	Female	Total	
Population Estimates ¹ at 31 December 2018	30,742	33,176 r	63,918 r	
Live Births During 2019				Live Births 8.2 per 1,000 of the population
In Wedlock	146	124	270	
Out of Wedlock	139	116	255	
Total	285	240	525	
Deaths During 2019				Deaths 8.4 per 1000 of the population
Resident Deaths ¹	272	263	535	
Natural Increase in Population				
Excess of Births over Deaths	13	-23	-10	
Population Estimates ² at 31 December 2019	30,755	33,153	63,908	

¹ Excludes nine non-resident deaths.

² Population estimates are based on 2016 census figures and subsequent natural increases from May 21, 2016

Table Symbols: r revised figures N/A not available/applicable



Of the 525 births recorded in 2019, two were residential births of babies at the home of the parents.



POPULATION

Resident Population

There was a decrease of 10 in the estimated resident population at the end of 2019 at 63,908 as opposed to the 63,918 in resident population estimate in 2018. At the end of 2019 there were 2,398 more females than males in the population figures. (See Table 1.0)

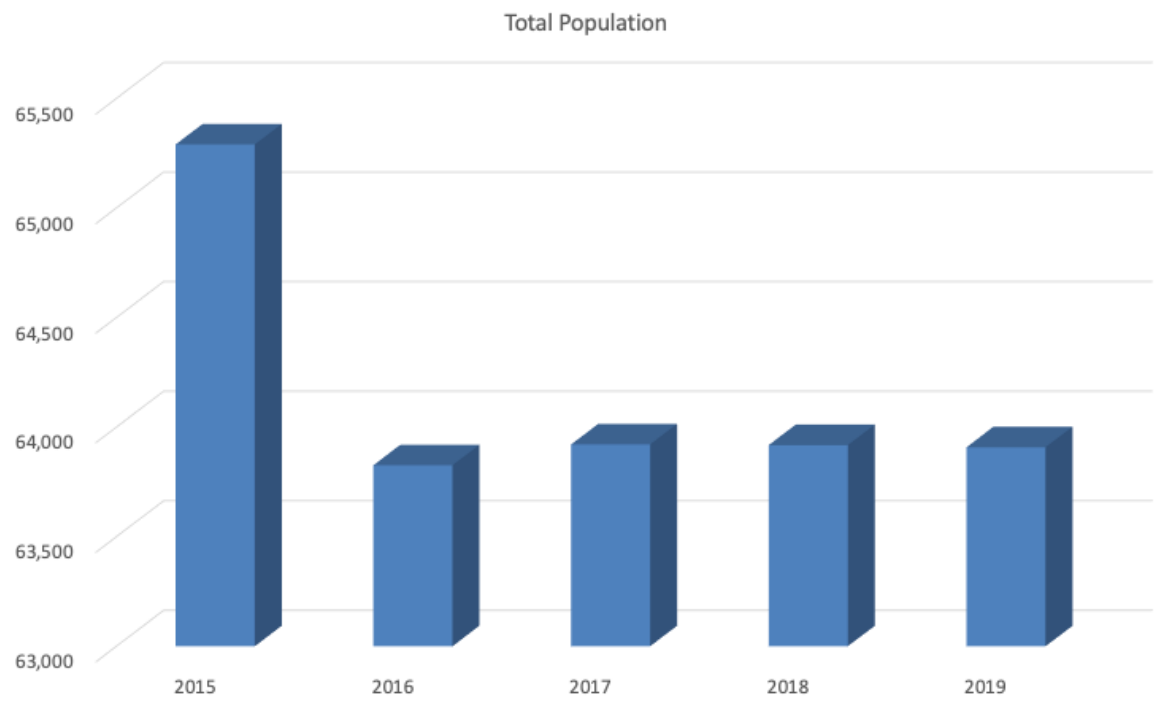
From the report given and statistics recorded in 2016, it would appear that there has been a significant drop in the population. However, the population estimates were re-based in 2016 after the 2016 Population and Housing Census. The re-base of the data is the reason why the population estimates are lower from 2016 forward.

Year	2015	2016	2017	2018	2019
Total Population	65,290	63,826	63,921	63,918 r	63,908

The statistics compiled by the Registry General do not take into consideration any effects on the population due to emigration or immigration.

Figure 1.0 shows the growth of the population over the past five years.

Figure 1.0
Population Estimates 2015 to 2019



Note: The population estimates were re-based in 2016 after the 2016 Population and Housing Census.



BIRTHS

Distribution of Live Births by Sex and Natal Status – 2015 to 2019

In 2019 the total number of live births of 525 births reflects a decrease of 5 or 0.9% over the previous year. The live births in respect of residents recorded in 2018 were 530. Out of the total number of live births recorded in 2019, 285 were male and 240 were female. In 2018, 256 male and 274 female live births were recorded.

There were two babies born at the parent’s homes in Hamilton and Sandy’s parishes. This is a decrease of one from the three babies born at home in 2018.

The total number of births for the year 2019 born out of wedlock was 255, a decrease of 4 from the previous year. A cumulative total of 2,805 live births were recorded for the five-year period from 2015 to 2019. The overall percentage of live births occurring out of wedlock was 45.1% over the same five-year period.

Table 2.0 shows the distribution of births by sex and natal status for the years 2015 to 2019.

Table 2.0
Distribution of Live Births by Sex and Natal Status – 2015 to 2019

Year	In Wedlock			Out of Wedlock			Live Births			% Out of Wedlock
	Male	Female	Total	Male	Female	Total	Male	Female	Total	
2015	164	153	317	131	135	266	295	288	583	45.6
2016	168	173	341	135	115	250	303	288	591	42.3
2017	162	178	340	127	109	236	289	287	576	41.0
2018	132	139	271	124	135	259	256	274	530	48.9
2019	146	124	270	139	116	255	285	240	525	48.6
Total	772	767	1,539	656	610	1,266	1,428	1,377	2,805	45.1

Distribution of Live Births by Parish

The majority of babies are born at the King Edward VII Memorial Hospital in Paget parish. However, for the purpose of this Report, the statistics shown in Table 2.1 below, relate to the parishes of residence of the mothers of the newborns at the time of birth and not to the parishes where the babies were actually born. The highest number of births by parish out of an island-wide total of 525 was recorded among the residents of both Pembroke and Warwick parishes (84 births each) who were responsible for 168 or 32.0% followed by the residents of Devonshire parish who were responsible for 64 or 12.2% of the total number of births recorded.

Table 2.1 shows the distribution of births by sex, natal status and parish.

Table 2.1
Distribution of Live Births by Sex, Natal Status and Parish – 2019

Parish	In Wedlock			Out of Wedlock			Grand Total	% Out of Wedlock
	Male	Female	Total	Male	Female	Total		
St. George's	7	5	12	20	15	35	47	74.5%
Hamilton	15	10	25	12	8	20	45	44.4%
Smith's	18	16	34	12	9	21	55	38.2%
Devonshire	18	13	31	21	12	33	64	51.6%
Pembroke	22	18	40	21	23	44	84	52.4%
Paget	18	20	38	7	4	11	49	22.4%
Warwick	24	19	43	22	19	41	84	48.8%
Southampton	14	8	22	8	8	16	38	42.1%
Sandys	10	15	25	16	18	34	59	57.6%
Total	146	124	270	139	116	255	525	48.6%

Multiple Births

The record number of sets of twins born in a single year continues to stand at 19 for the year 2013. In 2019 ten multiple births were recorded, a slight decrease from the eleven recorded in 2018. Four sets consisted of both female children, one set of both male children, and five sets of one male child and one female child out of the ten sets of twins born in 2019.

Table 2.2 shows the distribution of multiple births by sex over the past five years.

Table 2.2
Distribution of Multiple Births by Sex – 2015 to 2019

Year	Both Male	Both Female	Male & Female	Annual Total
2015	2	4	2	8
2016	2	6	3	11
2017	3	4	6	13
2018	4	3	4	11
2019	1	4	5	10
Total	12	21	20	53

Distribution of Live Births by Age of Mother

Women between the ages of 30 and 34 years continue to account for the highest number of the babies born in 2019 at 163 or 31.0%. This remains consistent with the figures over the past five years. For the period 2015 to 2019 women in the age group 35 to 39 years accounted for the second highest number of babies, and women in the age group 25 to 29 years account for the third highest number of babies. The two age groups (30 – 34 year olds and 35 to 39 year olds) were responsible 60.0% of the 2019 births. There was one baby born to mothers under the age of 16 in 2019, and there were five babies born to mothers in the age group 16 to 19.

Figure 2.0 shows the distribution of births by age of mother and natal status for the year ended 31st December, 2019. It can be seen from Figure 2.0 that married women between the ages of 35 and 39 years comprised the group responsible for the largest number of babies born.

Figure 2.0
Distribution of Live Births by Age of Mother and Natal Status – 2019

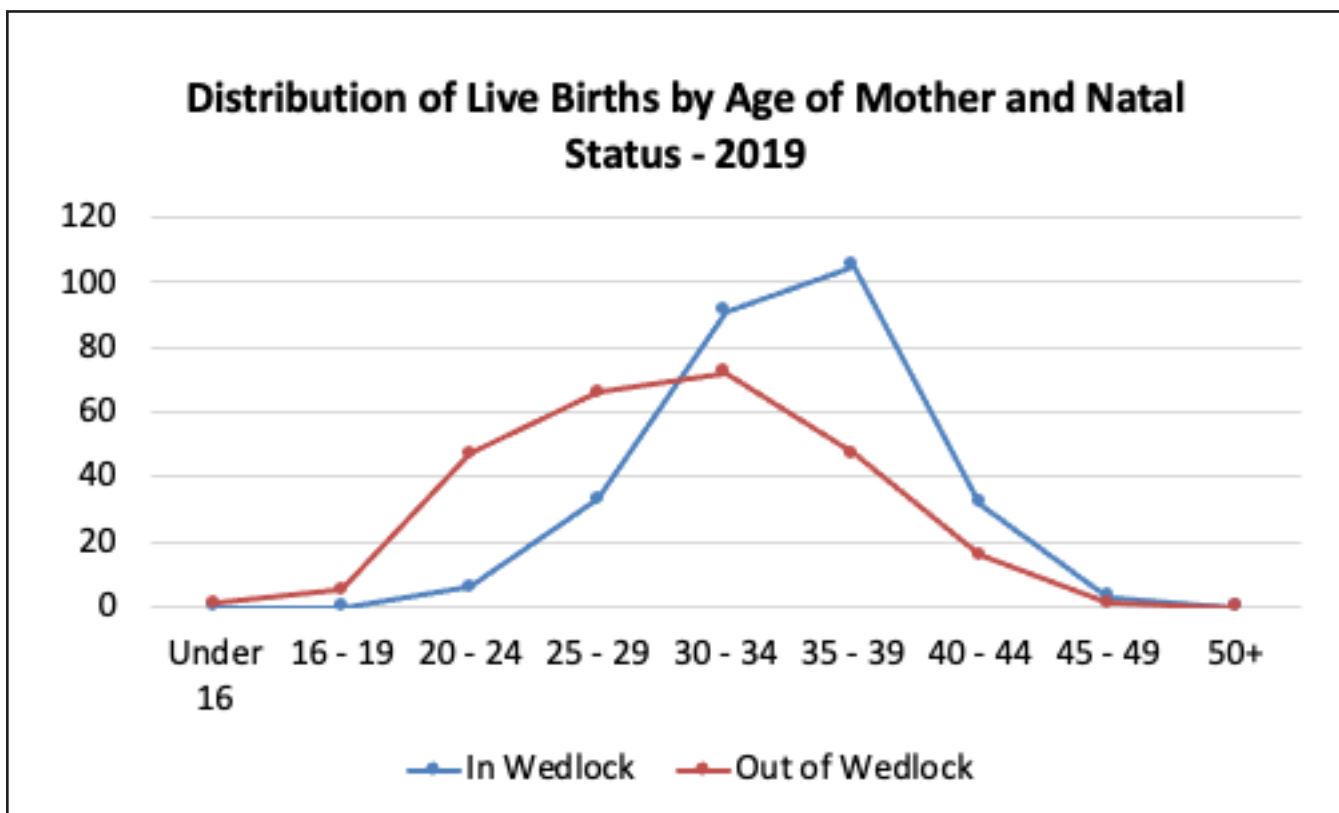


Table 2.3 shows the distribution of live births according to the age group of the mother for the five-year period 2015 to 2019. The peak in out of wedlock births occurs with respect to mothers in the 30 – 34 year old bracket and in wedlock births occurs in respect of mothers in the 35 – 39 years old bracket for 2019.

Table 2.3
Distribution of Live Births by Age of Mother of Children
Born In Wedlock – 2015 to 2019

Year	Under 16	16 – 19	20 – 24	25 – 29	30 – 34	35 – 39	40 – 44	45 – 49	50+	Total
2015	0	0	4	35	144	111	21	2	0	317
2016	0	1	7	49	138	117	27	2	0	341
2017	0	0	4	41	136	129	28	2	1	340
2018	0	0	5	36	112	91	22	4	1	271
2019	0	0	6	33	91	105	32	3	0	270
Total	0	1	26	194	621	553	130	13	1	1,539

Table 2.3 continued
Distribution of Live Births by Age of Mother of Children
Born Out of Wedlock – 2015 to 2019

Year	Under 16	16 – 19	20 – 24	25 – 29	30 – 34	35 – 39	40 – 44	45 – 49	50+	Total
2015	0	10	40	77	80	42	16	1	0	266
2016	1	10	50	82	55	32	19	1	0	250
2017	0	5	42	64	65	40	20	0	0	236
2018	0	7	51	73	58	55	14	1	0	259
2019	1	5	47	66	72	47	16	1	0	255
Total	2	37	230	362	330	216	85	4	0	1,266

Table 2.3 continued
Distribution of All Live Births by Age of Mother – 2015 to 2019

Year	Under 16	16 – 19	20 – 24	25 – 29	30 – 34	35 – 39	40 – 44	45 – 49	50+	Total
2015	0	10	44	112	224	153	37	3	0	583
2016	1	11	57	131	193	149	46	3	0	591
2017	0	5	46	105	201	169	48	2	0	576
2018	0	7	56	109	170	146	36	5	1	530
2019	1	5	53	99	163	152	48	4	0	525
Total	2	38	256	556	951	769	215	17	1	2,805

Distribution of Live Births by Nationality

It is important to note that the following statistics on the nationality of new-borns are compiled based on information provided by parents at the time of registration of their children's births.

There were 270 babies born in wedlock in 2019. Seventy-six babies or 28.1% were born of parents who are both Bermudian; 101 or 37.4% were born of parents who are both non- Bermudian; and 93 or 34.4% were born where one of the parents is Bermudian and the other a non-Bermudian.

There were 255 babies born out of wedlock in 2019, Two hundred and eight babies or 81.6% have parents who are both Bermudian; 18 or 7.1% have parents who are both non Bermudian and 29 or 11.4% have one Bermudian parent and the other a non-Bermudian parent.

Children with two non-Bermudian parents account for 86 or 16.2% of the total number of births in 2018, as compared to the 136 or 23.6% of the total births in 2017.

Over the five year period, 2015 to 2019, the percentage of children born to parents who were both Bermudian ranged from 50.7% in 2017 to 57.9% in 2018 .

Table 2.4 reflects the distribution of these births for the years 2015 to 2019.

The nationalities of the non-Bermudian parents, gathered for statistical purposes, represent over 51 different countries. The most frequently identified countries are Great Britain, United States of America, Canada, Jamaica, Ireland, Portugal, and Philippines.

ADDITIONAL VITAL EVENTS

Re-registrations

Re-registration is the process by which the births of children born out of wedlock are registered as if born in wedlock on the marriage of their biological parents. In 2019, there were 3 re-registrations conducted in the Registry General.

Adoptions

In 2019 there were no adoptions recorded, as oppose to the six adoptions recorded in 2018.

**Table 2.4
Distribution of Live Births by Nationality**

Year	In Wedlock				% In Wedlock				% of Total Births						
	2015	2016	2017	2018	2019	2015	2016	2017	2018	2019	2015	2016	2017	2018	2019
Both Bermudian Parents	91	106	109	94	76	28.7%	31.1%	32.1%	34.7%	28.1%	15.6%	17.9%	18.9%	17.7%	14.5%
"One Bermudian and One Non Bermudian Parent"	102	129	110	101	93	32.2%	37.8%	32.4%	37.3%	34.4%	17.5%	21.8%	19.1%	19.1%	17.7%
At Least One Bermudian Parent	193	235	219	195	169	60.9%	68.9%	64.4%	72.0%	62.6%	33.1%	39.8%	38.0%	36.8%	32.2%
Both Non Bermudian Parents	124	106	121	76	101	39.1%	31.1%	35.6%	28.0%	37.4%	21.3%	17.9%	21.0%	14.3%	19.2%
Total In Wedlock Births	317	341	340	271	270	100.0%	100.0%	100.0%	100.0%	100.0%	54.4%	57.7%	59.0%	51.1%	51.4%
						% Out of Wedlock				% of Total Births					
Year	2015	2016	2017	2018	2019	2015	2016	2017	2018	2019	2015	2016	2017	2018	2019
Both Bermudian Parents	220	214	183	213	208	82.7%	85.6%	77.5%	82.2%	81.6%	37.7%	36.2%	31.8%	40.2%	39.6%
"One Bermudian and One Non Bermudian Parent"	24	24	38	36	29	9.0%	9.6%	16.1%	13.9%	11.4%	4.1%	4.1%	6.6%	6.8%	5.5%
At Least One Bermudian Parent	244	238	221	249	237	91.7%	95.2%	93.6%	96.1%	92.9%	41.9%	40.3%	38.4%	47.0%	45.1%
Both Non Bermudian Parents	22	12	15	10	18	8.3%	4.8%	6.4%	3.9%	7.1%	3.8%	2.0%	2.6%	1.9%	3.4%
Total Out of Wedlock Births	266	250	236	259	255	100.0%	100.0%	100.0%	100.0%	100.0%	45.6%	42.3%	41.0%	48.9%	48.6%
						% Total				% of Total Births					
Year	2015	2016	2017	2018	2019	2015	2016	2017	2018	2019	2015	2016	2017	2018	2019
Both Bermudian Parents	311	320	292	307	284	53.3%	54.1%	50.7%	57.9%	54.1%	53.3%	54.1%	50.7%	57.9%	54.1%
"One Bermudian and One Non Bermudian Parent"	126	153	148	137	122	21.6%	25.9%	25.7%	25.8%	23.2%	21.6%	25.9%	25.7%	25.8%	23.2%
At Least One Bermudian Parent	437	473	440	444	406	75.0%	80.0%	76.4%	83.8%	77.3%	75.0%	80.0%	76.4%	83.8%	77.3%
Both Non Bermudian Parents	146	118	136	86	119	25.0%	20.0%	23.6%	16.2%	22.7%	25.0%	20.0%	23.6%	16.2%	22.7%
Total Live Births	583	591	576	530	525	100.0%	100.0%	100.0%	100.0%	100.0%	100.0%	100.0%	100.0%	100.0%	100.0%



MARRIAGES

Statistics Relating to Marriages – 2015 to 2019

Marriage statistics include all marriages that took place in Bermuda irrespective of the country of residence of the parties. There were a total of 386 marriages recorded for the year ending December 31, 2019, representing a decrease of 87 or 18.4% from the 2018 figure of 473.

The number of civil ceremonies performed by the Registrar General totalled 540 or 23.9% of the total of 2,259 marriages recorded over the past five years. The remaining 1,719 marriages were religious ceremonies held at places of worship throughout the Island and other venues.

Table 3.0 provides a distribution of marriages by type of ceremony.

Table 3.0
Distribution of Marriages by Type of Ceremony – 2015 to 2019

Year	Religious/Denominational Marriages	Civil Marriages	Total
2015	391	118	509
2016	352	99	451
2017	316	124	440
2018	382	91	473
2019	278	108	386
Total	1,719	540	2,259



In 2019 there were 60 marriages performed in places of worship, 108 took place at the Registry General Office, and 218 marriages took place at other venues.

Distribution of Marriages by Religion/Denomination

In 2019, there were 278 religious marriages that were held at places of worship or venues other than church buildings. This was a decrease of 27.2% from the figure recorded in 2018.

Table 3.1 gives a breakdown of marriages by religion/denomination for the period 2015 to 2019.

Table 3.1
Distribution of Marriages by Religion/Denomination – 2015 to 2019

Year	Anglican	African Methodist Episcopal	Baptist	Methodist	Presbyterian	Roman Catholic	Seventh-day Adventist	Other Religions/Denominations ¹	Total Religious Marriages
2015	27	9	0	4	6	13	7	325	391
2016	23	12	0	3	5	8	5	296	352
2017	36	9	0	2	4	9	3	253	316
2018	47	10	1	0	5	9	3	307	382
2019	27	9	2	0	3	5	4	228	278
Total	160	49	3	9	23	44	22	1,409	1,719

¹ Includes religious ceremonies held at places of worship of other religions/denominations and religious ceremonies held at venues other than church buildings.

Marriage Venues

The Registry General conducted 108 civil marriage ceremonies or 28.0% of all marriages taking place in 2019. Of the 108 civil marriage ceremonies performed, fourteen ceremonies were conducted at alternative approved locations provided for under the Marriage (Alternative Approved Locations) Regulations 2016. There were 60 marriages celebrated at places of worship identified in Table 3.2 below. Also, there were 218 marriages that were performed at other venues, of which 114 took place in hotels, restaurants, guest houses or clubs; and a further 104 marriages were performed in homes, gardens, parks, or on beaches and boats. Additionally, 56.5% of the marriages performed in 2019 took place at locations other than places of worship or the Registry General.

Table 3.2 shows the distribution of marriages by parish and venue. Pembroke parish continues to record the highest number of marriages, primarily due to the high incidence of civil marriage ceremonies. Warwick, Southampton and St. George's parishes also accounted for a relatively large number of marriage ceremonies due to the number of ceremonies conducted within their boundaries at venues other than places of worship.

Table 3.2
Distribution of Marriages by Parish and Venue – 2019

Parish	Anglican	African Methodist Episcopal	Baptist	Methodist	Presbyterian	Roman Catholic	Seventh-day Adventist	Other Places of Worship	Venues Other than Church Buildings ¹	Civil Marriages	Total
St. George's	16	1	0	0	0	0	0	0	14	0	31
Hamilton	4	1	0	0	0	0	0	1	14	1	21
Smith's	1	0	0	0	0	0	0	0	6	1	8
Devonshire	1	0	2	0	0	0	0	0	6	0	9
Pembroke	2	3	0	0	0	4	0	7	16	96	128
Paget	1	0	0	0	0	1	0	0	25	3	30
Warwick	1	0	0	0	3	0	1	1	55	6	67
Southampton	1	4	0	0	0	0	2	1	47	1	56
Sandys	0	0	0	0	0	0	1	0	35	0	36
Total	27	9	2	0	3	5	4	10	218	108	386

¹ Religious ceremonies held outside of places of worship – on beaches, boats, in hotels, guest houses, restaurants, clubs, homes, gardens, parks, etc.

Persons Marrying by Age Group of Partners

The largest number of persons who married in 2019 and 2018 is represented by the age group of 30 – 34 year olds. One hundred and seventy-eight, or 23.1%, of the total of 772 persons who married during 2019 were between 30 and 34 years of age.

Table 3.3 shows the comparative distribution of age and sex of persons married in 2019 and 2018.

Table 3.3
Distribution of Persons Marrying by Sex and Age Group of Partners – 2019 and 2018

Age	2019			2018		
	Male	Female	Total	Male	Female	Total
16-19	0	1	1	1	1	2
20-24	10	29	39	13	15	28
25-29	57	81	138	67	91	158
30-34	85	93	178	132	137	269
35-39	62	53	115	73	79	152
40-44	34	24	58	44	45	89
45-49	39	31	70	38	36	74
50-54	30	28	58	43	32	75
55-59	38	23	61	24	16	40
60-64	15	17	32	22	15	37
65-69	8	3	11	8	4	12
70-74	2	3	5	6	1	7
75-79	3	2	5	2	0	2
80-89	0	0	0	0	0	0
90 & over	1	0	1	0	1	1
Total	384	388	772	473	473	946

Distribution of Marriages by Residential Status of Partners

During 2019 non-residents accounted for 195 or 50.5% of the total of 386 marriages taking place. This figure, representing a decrease of 26.7 percentage points over the previous year's figure, is in keeping with the trend over the past five years for marriages between non-residents to exceed the total number of marriages between residents and marriages between residents and non-residents.

Table 3.4 shows the distribution of marriages from 2015 to 2019 by residential status of the parties to the marriage.

Table 3.4
Distribution of Marriages by Residential Status – 2015 to 2019

Year	Residents ¹	Non-Residents ²	Residents & Non-Residents ³	Total
2015	194	272	43	509
2016	178	231	42	451
2017	164	234	42	451
2018	167	266	40	473
2019	153	195	38	386
Total	856	1,198	205	2,259

¹ Marriages between parties who were both residents

² Marriages between parties who were both non-residents

³ Marriages between a party who was a resident and a non-resident party

Same-Sex Marriages

There were a total of 4 same-sex marriages recorded for the year ending December 31, 2019, representing a decrease of 2 or 33.3% from the 2018 figure of 6.

All six same-sex marriages were civil ceremonies were performed at the Registry General Office.

Table 3.5
Distribution of Same-Sex Marriages by Type of Ceremony – 2019

Year	Religious/Denominational Marriages ¹	Civil Marriages	Total
2018	0	6	6
2019	0	4	4

¹ Religious ceremonies held at places of worship of other religions/denominations and religious ceremonies held at venues other than church buildings.



During 2019 non-residents accounted for 195 or 50.5% of the total of 386 marriages that took place.

Same-Sex Marriage Venues

The Registry General conducted three same-sex civil marriage ceremonies or 75% of the same-sex marriages taking place in 2019. One of which was conducted at the Registry General Office and two were conducted at alternative approved locations provided for under the Marriage (Alternative Approved Locations) Regulations 2016, or a places of worship. The remaining same-sex marriage was a religious ceremony conducted by a local marriage officer at an outside venue.

Table 3.6 shows the distribution of same-sex marriages by parish and venue. Pembroke parish recorded the highest number of same-sex marriages, primarily because all of ceremonies were conducted at the Registry General Office.

Table 3.6
Distribution of Same-Sex Marriages by Parish and Venue – 2019

Parish	Civil	Home	Hotel	Total Same-Sex Marriages
St. George's	0	0	0	0
Hamilton	1	0	0	1
Smith's	0	0	0	0
Devonshire	0	0	0	0
Pembroke	1	0	0	1
Paget	1	0	0	1
Warwick	0	1	0	1
Southampton	0	0	0	0
Sandys	0	0	0	0
Total	3	1	0	4

Same-Sex Persons Marrying by Age Group of Partners

The largest number of same-sex persons who married in 2019 and 2018 is represented by the age group of 30 – 34 year olds. Four, or 50%, of the total of 8 same-sex persons who married during 2019 were between 30 and 34 years of age.

Table 3.7 shows the comparative distribution of age and sex of persons married in 2019 and 2018.

Table 3.7
Distribution of Same-Sex Marriages by Age and Sex of Partners

Age	2019			2018		
	Male	Female	Total	Male	Female	Total Persons
16-19	0	0	0	0	0	0
20-24	0	3	3	0	0	0
25-29	0	0	0	1	2	3
30-34	2	2	4	2	2	4
35-39	0	1	1	2	0	2
40-44	0	0	0	1	1	2
45-49	0	0	0	0	0	0
50-54	0	0	0	0	1	1
55-59	0	0	0	0	0	0
60-64	0	0	0	0	0	0
65-69	0	0	0	0	0	0
70-74	0	0	0	0	0	0
75-79	0	0	0	0	0	0
80-89	0	0	0	0	0	0
90 & over	0	0	0	0	0	0
Total	2	6	8	6	6	12

Distribution of Same-Sex Marriages by Residential Status of Partners

During 2019 residents accounted for one or 25% of the total of 4 same-sex marriages taking place. Three or 75% accounted for the number of same-sex marriages between non-residents, and there were no same-sex marriages between a resident and non-residents.

Table 3.8 shows the distribution of same-sex marriages by residential status of the parties to the marriage.

Table 3.8
Distribution of Same-Sex Marriages by Residential Status – 2019

Year	Residents ¹	Non-Residents ²	Residents & Non-Residents ³	Total
2018	3	1	2	6
2019	1	3	0	4

¹ Marriages between parties who were both residents.

² Marriages between parties who were both non-residents.

³ Marriages between a party who was a resident and a non-resident party.

Maritime Marriages

There were a total of 442 marriages performed on board 28 Bermuda registered ships in 2019. This total represents a decrease of 30 or 6.4% from the 2018 total of 472. Of the 442 maritime marriages, two were same-sex ceremonies. One marriage ceremony was between a same-sex male couple and the other marriage ceremony was between a same-sex female couple.

DOMESTIC PARTNERSHIPS

The Domestic Partnership Act 2018 allowed for the formalization of unions between partners. There were four domestic partnership unions recorded for the year ending December 31, 2019.

All four domestic partnership ceremonies were performed at the Registry General Office.

Table 4.0 shows the distribution of domestic partnership unions by parish and venue. Pembroke parish recorded the highest number of domestic partnership unions, primarily because all of the ceremonies were conducted at the Registry General Office.

Table 4.0
Distribution of Domestic Partnerships by Parish and Venue – 2019 and 2018

Parish	2019				2018			
	Civil	Home	Hotel	Total Domestic Partnerships	Civil	Home	Hotel	Total Domestic Partnerships
St. George's	0	0	0	0	0	0	0	0
Hamilton	0	0	0	0	0	0	0	0
Smith's	0	0	0	0	0	0	0	0
Devonshire	0	0	0	0	0	0	0	0
Pembroke	4	0	0	4	2	0	0	2
Paget	0	0	0	0	0	0	0	0
Warwick	0	0	0	0	0	0	0	0
Southampton	0	0	0	0	0	0	0	0
Sandys	0	0	0	0	0	0	0	0
Total	4	0	0	4	2	0	0	2

Distribution of Domestic Partnerships by Parish and Venue

All of the domestic partnership unions performed in 2019 were recorded in Pembroke Parish, primarily because the unions were formalized at the Registry General Office. None of the ceremonies were formalized at an alternative approved locations as allowed for under the Domestic Partnership Act 2018.

Table 4.1 gives a breakdown of the month domestic partnership ceremonies were performed for the period 2019 and 2018.

Table 4.1
Distribution of Domestic Partnerships by Month – 2019 and 2018

	2019				2018			
	Male/ Male	Female/ Female	Male/ Female	Total Domestic Partnerships	Male/ Male	Female/ Female	Male/ Female	Total Domestic Partnerships
January	0	0	0	0	0	0	0	0
February	1	0	0	1	0	0	0	0
March	0	0	0	0	0	0	0	0
April	0	0	0	0	0	0	0	0
May	0	0	0	0	0	0	0	0
June	0	0	2	2	0	0	0	0
July	0	0	0	0	0	0	0	0
August	0	0	0	0	0	0	0	0
September	0	0	1	1	0	0	0	0
October	0	0	0	0	0	1	0	1
November	0	0	0	0	0	0	0	0
December	0	0	0	0	0	0	1	1
Total	1	0	3	4	0	1	1	2

Distribution of Domestic Partnerships Unions by Month

During 2019, one of the four domestic partnership unions recorded that year was performed in the month of October, two were performed in the month of June and one was performed in September.

Table 4.2 shows the comparative distribution of age and sex of persons who formalized their union in 2019 and 2018.

Table 4.2
Distribution of Domestic Partnerships by Sex and Age of Partners – 2019 and 2018

Age	2019			2018		
	Male	Female	Total Persons	Male	Female	Total Persons
20-24	0	0	0	0	1	1
25-29	2	0	2	0	1	1
30-34	0	0	0	0	0	0
35-39	1	1	2	1	1	2
40-44	1	1	2	0	0	0
45-49	0	0	0	0	0	0
50-54	0	1	1	0	0	0
55-59	1	0	1	0	0	0
60-64	0	0	0	0	0	0
65-69	0	0	0	0	0	0
70-74	0	0	0	0	0	0
75-79	0	0	0	0	0	0
80-89	0	0	0	0	0	0
90 & over	0	0	0	0	0	0
Total	5	3	8	1	3	4

Domestic Partnerships by Sex and Age of Partners

The largest number of persons who entered into a domestic partnership in 2019 are equally represented by the age groups of 25 – 29, 35 – 39, and 40 – 44 year olds. Six or 75%, of the total of 8 persons who entered a domestic partnership during 2019 were between 25 - 29 and 35 – 44 years of age. Five were males and three were females. Of the remaining two persons who entered into a domestic partnership one was female in the age group 50 – 54 and the other was male in the age group 55 – 59.

Table 4.3 shows the distribution of domestic partnerships by Residential Status of the parties to the union.

Table 4.3
Distribution of Domestic Partnerships by Residential Status – 2019 and 2018

Year	Residents ¹	Non-Residents ²	Residents & Non-Residents ³	Total Couples
2018	1 couple	0 couples	1 couple	2 couples
2019	3 couples	0 couples	1 couple	4 couples
Total	4 couples	0 couples	2 couples	6 couples

¹ Domestic Partnerships between parties who were both residents

² Domestic Partnerships between parties who were both non-residents

³ Domestic Partnerships between a party who was a resident and a non-resident party

Distribution of Domestic Partnerships by Residential Status of Partners

During 2019 domestic partnership ceremonies between residents accounted for three or 75% of the total number of ceremonies taking place. There was one domestic partnership ceremony between a resident and non-resident which accounted for the remaining 25% of the total number of domestic partnerships formalized that year, and none of the domestic partnership ceremonies recorded in 2019 were between non-residents.

The domestic partnership ceremonies between couples who were both residents, all three ceremonies were between a male and female. The domestic partnership ceremony between a resident and non-resident, both were males.

Maritime Domestic Partnerships

There were no domestic partnership ceremonies performed on board any of 28 Bermuda registered ships in 2019.



DEATHS

Death Statistics Including Stillbirths – 2015 to 2019

The number of deaths of residents recorded in 2019 was 535; an increase of 2 or 0.4% from 533 deaths recorded in 2018. There were no stillbirths recorded in 2019 as oppose to the five stillbirths recorded in 2018.

Table 5.0 contains a breakdown of deaths over the period 2015 to 2019 by sex and stillbirths. The figures show that the total number of deaths among males exceeded that among females for the period. The number of stillbirths recorded for the period ranged between 0 and 5 per year with an average of 2 over the five year span.

Table 5.0
Distribution of Deaths by Sex and Stillbirths – 2015 to 2019

Year	Male	Female	Total	Stillbirths
2015	260	218	478	2
2016	266	226	492	1
2017	244	237	481	0
2018	265	268 r	533 r	5
2019	272	263	535	0
Total	1,307	1,212	2,519	8



In 2019, 535 deaths of residents were recorded; an increase of 2 from that recorded in 2018

Deaths by Age and Sex – 2015 to 2019 (Excluding stillbirths and non-resident deaths)

Table 5.1 shows a breakdown of deaths, by age groups, occurring between 2015 and 2019.

The average age at death was 74.4 years for males, 80.2 years for females and 77.2 years for all persons in 2019.

Table 5.1
Distribution of Deaths by Age and Sex – 2015 to 2019

Age Group	2015			2016			2017			2018		
	M	F	T	M	F	T	M	F	T	M	F	T
0 - 4	2	0	2	2	0	2	0	0	0	1	0	1
5 - 9	0	0	0	0	1	1	0	0	0	0	0	0
10 - 14	0	0	0	0	1	1	0	0	0	0	1	1
15 - 19	1	0	1	2	1	3	0	0	0	0	1	1
20 - 24	2	1	3	4	0	4	4	1	5	1	0	1
25 - 29	1	0	1	2	2	4	2	1	3	2	1	3
30 - 34	3	0	3	4	2	6	6	0	6	5	0	5
35 - 39	0	1	1	6	1	7	2	1	3	1	1	2
40 - 44	1	2	3	4	3	7	2	3	5	2	1	3
45 - 49	2	4	6	4	2	6	7	4	11	8	7	15
50 - 54	10	4	14	14	4	18	6	9	15	14	4	18
55 - 59	21	8	29	15	16	31	19	8	27	15	10	25
60 - 64	17	11	28	33	8	41	30	8	38	20	18	38
65 - 69	27	12	39	25	14	39	28	13	41	22	15	37
70 - 74	31	17	48	33	17	50	20	20	40	34	27 r	61 r
75 - 79	32	26	58	36	22	58	25	27	52	24	22	46
80 - 84	36	36	72	30	32	62	35	22	57	37	48	85
85 - 89	39	45	84	30	32	62	36	47	83	42	42	84
90 - 94	16	31	47	19	45	64	20	47	67	26	36	62
95 - 99	5	10	15	3	19	22	2	22	24	9	27	36
100 & Over	1	8	9	0	4	4	0	4	4	2	7	9
Total ¹	260	218	478	266	226	492	244	237	481	265	268 r	533 r

M = Male, F = Female, T = Total.

¹ Excludes non-resident deaths

Distribution of Deaths by Age and Sex – 2019 (Excluding stillbirths and non-resident deaths)

Table 5.2 shows the distribution of deaths within various age groups as a percentage of the total number of deaths occurring in 2019 among the resident population.

Within the 80 – 84 year-old age group 92 or 17.2% of deaths occurred, followed by 84 or 15.7% in the 85 – 89, and 64 or 12.0% in the 90 – 94 year-old age groups out of a total of 535 deaths recorded. The number of males exceeded the number of females in the distribution of deaths between the sexes in all age groups except age groups 5 – 9, 10 – 14, 15 – 19, 25 – 29, 35 – 39, 60 – 64, 80 – 84, 85 – 89, 90 - 94, 95 - 99 and over 100+.

Table 5.2
Distribution of Deaths by Age and Sex – 2019

Age	Male	Female	Total ¹	Per cent		
				Male	Female	Total
0 - 4	1	0	1	0.2%	0.0%	0.2%
5 - 9	0	0	0	0.0%	0.0%	0.0%
10 - 14	0	0	0	0.0%	0.0%	0.0%
15 - 19	1	1	2	0.2%	0.2%	0.4%
20 - 24	2	0	2	0.4%	0.0%	0.4%
25 - 29	0	0	0	0.0%	0.0%	0.0%
30 - 34	1	0	1	0.2%	0.0%	0.2%
35 - 39	1	3	4	0.2%	0.6%	0.7%
40 - 44	3	2	5	0.6%	0.4%	0.9%
45 - 49	3	1	4	0.6%	0.2%	0.7%
50 - 54	8	7	15	1.5%	1.3%	2.8%
55 - 59	18	4	22	3.4%	0.7%	4.1%
60 - 64	16	23	39	3.0%	4.3%	7.3%
65 - 69	31	15	46	5.8%	2.8%	8.6%
70 - 74	36	21	57	6.7%	3.9%	10.7%
75 - 79	41	18	59	7.7%	3.4%	11.0%
80 - 84	45	47	92	8.4%	8.8%	17.2%
85 - 89	34	50	84	6.4%	9.3%	15.7%
90 - 94	22	42	64	4.1%	7.9%	12.0%
95 - 99	9	24	33	1.7%	4.5%	6.2%
100 & Over	0	5	5	0.0%	0.9%	0.9%
Total	272	263	535	50.8%	49.2%	100%

¹ Excludes nine non-resident deaths

Distribution of Deaths by Age and Parish of Residence of the Deceased - 2019 (Excluding stillbirths and non-resident deaths)

Table 5.3 contains a breakdown of deaths by parish of residence of the deceased within specific age groups. Pembroke Parish resident's recorded 105 or 19.6% of deaths in 2019. This figure which represents the largest number of deaths in a single parish for the total number of deaths recorded for the year.

Five deaths were recorded in 2019 among centenarians. Two of these decedents were resident in Pembroke, one was resident in St. George's, one was resident of Devonshire, and the remaining decedent was a resident in Warwick.

Table 5.3
Distribution of Deaths by Age and Parish of Residence of the Deceased – 2019

% Overall											
Age	St. George's	Hamilton	Smith's	Devonshire	Pembroke	Paget	Warwick	Southampton	Sandy's	Total ¹	Total
0 - 11 m	1	0	0	0	0	0	0	0	0	1	0.2%
12 - 23 m	0	0	0	0	0	0	0	0	0	0	0.0%
2 - 4	0	0	0	0	0	0	0	0	0	0	0.0%
5 - 9	0	0	0	0	0	0	0	0	0	0	0.0%
10 - 14	0	0	0	0	0	0	0	0	0	0	0.0%
15 - 19	0	1	0	0	0	0	1	0	0	2	0.4%
20 - 24	0	0	0	0	0	0	0	1	1	2	0.4%
25 - 29	0	0	0	0	0	0	0	0	0	0	0.0%
30 - 34	0	0	0	0	0	0	0	1	0	1	0.2%
35 - 39	0	1	0	0	1	0	1	0	1	4	0.7%
40 - 44	0	0	0	2	1	0	0	2	0	5	0.9%
45 - 49	0	0	0	0	3	0	0	0	1	4	0.7%
50 - 54	1	0	4	1	2	1	3	1	2	15	2.8%
55 - 59	1	1	2	2	9	1	2	0	4	22	4.1%
60 - 64	3	4	2	7	9	3	5	1	5	39	7.3%
65 - 69	6	3	4	6	7	7	5	4	4	46	8.6%
70 - 74	5	2	1	4	13	5	15	4	8	57	10.7%
75 - 79	2	9	1	7	9	5	10	7	9	59	11.0%
80 - 84	11	4	8	16	17	3	14	8	11	92	17.2%
85 - 89	11	9	5	9	14	9	10	8	9	84	15.7%
90 - 94	4	2	3	5	14	8	12	9	7	64	12.0%
95 - 99	6	3	2	5	4	4	5	2	2	33	6.2%
100 & Over	1	0	0	1	2	0	1	0	0	5	0.9%
Total	52	39	32	65	105	46	84	48	64	535	100%

¹ Excludes nine non-residents.

Infant Mortality Rates

In 2019 there was one infant death recorded.

Table 5.4 shows the number of infant deaths and the infant mortality rate per thousand live births for the period 2015 to 2019.

Table 5.4
Infant Mortality – 2015 to 2019

Year	Infant Deaths	Rate per 1000
2015	2	3.4
2016	2	3.4
2017	0	0
2018	1	1.9
2019	1	1.9



Deaths of Non-Residents – 2019

There were nine deaths recorded amongst non-residents in 2019, five deaths in respect of female visitors and four of the deaths were in respect of male visitors. Seven of the visitors died from natural causes, and one visitor died from injuries due to a road traffic accident, and the remaining death was due to asphyxia.

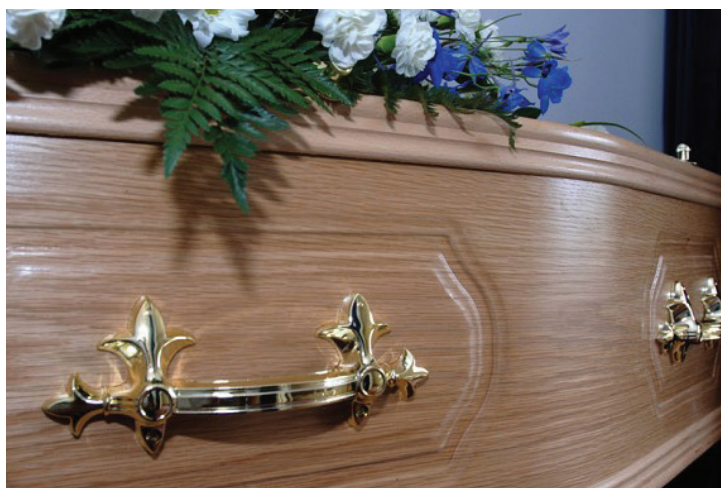
Table 5.5 shows the total number of deaths of non-residents by sex for the years 2015 to 2019.

Table 5.5
Deaths of Non-Residents – 2015 to 2019

Year	Male	Female	Total
2015	7	2	9
2016	7	4	11
2017	10	3	13
2018	7	4	11
2019	4	5	9
Total	35	18	53

Coroners' Cases

There were 97 deaths investigated by the Coroner's Office in 2019 of which nine related to visitors to the Island.



The total number of deaths among males exceeded that among females for the year 2019.

APPENDIX

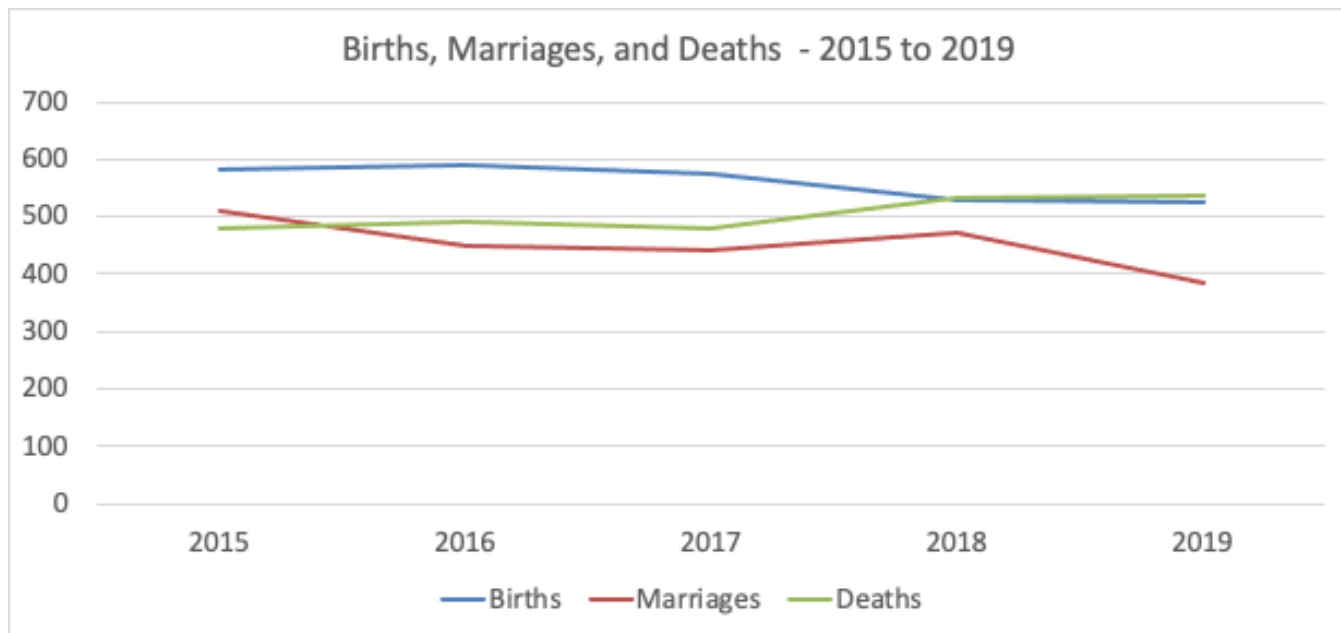
Table A – Births, Marriages, Domestic Partnerships, Deaths and Population Estimates – 2015 to 2019

Year	Births	Marriages	Domestic Partnerships	Deaths	Population Estimates ¹
2015	583	509	0	478	65,290 ¹
2016	591	451	0	492	63,826 ²
2017	576	440	0	481	63,921 ²
2018	530	473	2	533 ^r	63,918 ^{2 r}
2019	525	386	4	535	63,908 ²

¹ Population estimates are based on 2010 census figures and subsequent natural increases from 21 May 2010.

² Population estimates are based on 2016 census figures and subsequent natural increases from 21 May 2016.

Figure A – Births, Marriages and Deaths – 2015 to 2019





Design and pre-press production:
Department of Communications
Printed in Bermuda by Bermuda Blueprinting. – August 2020